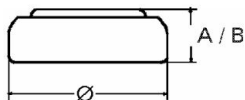


Type Number..... 337
Designation IEC..... SR 416 SW
System..... Silver oxide/ Zinc /
 NaOH - Electrolyte



Nominal Voltage..... 1,55 V
Typical Capacity C..... 8 mAh
 Load 68,1 kOhm, at 20°C down to 1.3 V

Weight (approx.)..... 0,13 g
Volume.....
Coding..... Date of Manufacturing
 Month/Year

Temperature Ranges min max.
 Storage..... -10°C 65°C
 Discharge..... -10°C 65°C

Dimensions min max.
 Diameter (Ø)..... 4,55 4,80
 Height (A/B)..... 1,45 1,65

Segment..... Watch

Main Applications..... Watch
 Electronic Devices

Typical Capacities (at 20°C)

Discharge Type	Load	End Voltage: 1.3V
Continuous 24h/d, 7d/w Current [μ A]	68100 Ω 23	Time: 355 h Capacity [mAh]: 8 Energy [MWh]: 12,5

All Data contained herein is for single cells
 For battery applications, performance data may vary from single cell data, depending on specific battery configuration